

# Gastroenterology

## Medical Imaging Expertise

Clario has broad capabilities and deep experience in imaging for Gastroenterology (GI). From our earliest work in inflammatory bowel disease (IBD), we have expanded into trials focusing on erosive esophagitis (EE), eosinophilic esophagitis (EoE), gastroesophageal reflux disease (GERD), nonalcoholic steatohepatitis (NASH), and more. We work with many key opinion leaders in the field, who appreciate our long-standing

### Imaging modalities

- Video Endoscopy
- MR Enterography
- Capsule Endoscopy
- CT Enterography
- MRI
- Intestinal Ultrasound (IUS)

### The team

- Reading group built to **handle high volume** and **expedited reads** as well as lower and upper GI indications
- **Project Managers** experienced in various indications
- **Technologists** to **support video** and image quality control

### The future of medical imaging

Medical imaging is always advancing, and so are we at Clario. We are currently employing machine learning and computer-assisted imaging to innovate the future of GI clinical trials. Another advancement on the horizon includes image enhancement to increase reader reproducibility, automated annotations and scoring.

For more information, go to [clario.com](https://clario.com) or email [info@clario.com](mailto:info@clario.com)

reputation for innovation and excellence in imaging built over the past 30 years. And, no one else can offer you more experience with logistics and international operations than Clario. With our international network of renowned readers, innovative reading paradigms and global logistics expertise in more than 80 countries, you can trust Clario to scale your trial globally.

### GI clinical trial experience in IBD

- 33 in Ulcerative Colitis
  - 5 in pediatric populations
- 28 in Crohn's Disease
  - 4 in pediatric populations
- 4 in Fistulizing Crohn's Disease

### Areas of Focus

- Erosive Esophagitis (EE)
- Eosinophilic Esophagitis (EoE)
- Diverticulitis and Celiac Disease
- Familial Adenomatous Polyposis (FAP)
- Varices in NASH
- Bowel Prep
- Fecal Incontinence



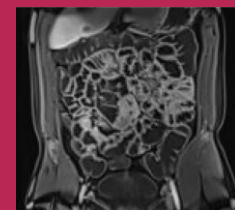
Crohn's ulcer<sup>1</sup>



Esophageal varices<sup>1</sup>



Erosive esophagitis<sup>2</sup>



MRE of small bowel<sup>3</sup>