
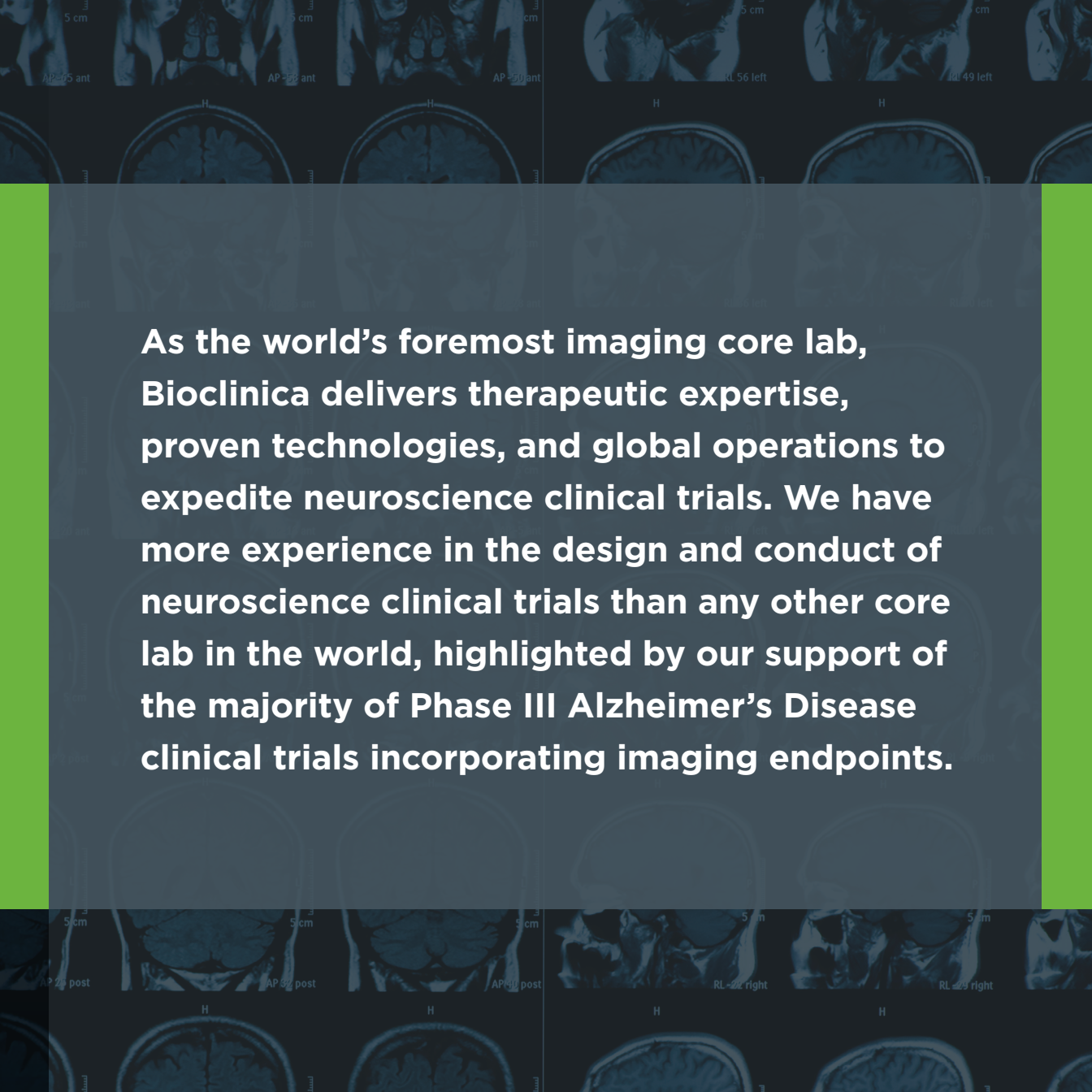


# **BIOCLINICA**

## COMPREHENSIVE NEUROSCIENCE SERVICES

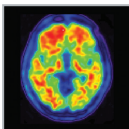
The background of the lower half of the image is a blurred photograph of a person in a blue shirt and red tie. Overlaid on this is a teal-colored, wireframe-style illustration of a human brain. A hand is holding a magnifying glass over the brain, focusing on a specific area. The magnifying glass has a dark frame and a clear lens.

**Leverage Bioclinica's unrivaled scientific and operational expertise to see deeper into your neuroscience clinical trial endpoints**



**As the world's foremost imaging core lab, Bioclinica delivers therapeutic expertise, proven technologies, and global operations to expedite neuroscience clinical trials. We have more experience in the design and conduct of neuroscience clinical trials than any other core lab in the world, highlighted by our support of the majority of Phase III Alzheimer's Disease clinical trials incorporating imaging endpoints.**

# COMPREHENSIVE SERVICES FOR YOUR NEUROSCIENCE TRIAL:



**WORLD-CLASS NEUROSCIENCE EXPERTISE**



**CENTRALIZED IMAGE ANALYSIS**



**STUDY DESIGN AND PROTOCOL DEVELOPMENT**



**GLOBAL SITE SELECTION AND AUTHORIZATION**



**ECG AND AMBULATORY BLOOD PRESSURE  
MONITORING (ABPM)**

## SCIENTIFIC EXPERTISE

Neuroscience clinical trials rely on the accurate collection of high-quality image data for complex endpoints. Bioclinica's unrivalled neuroscience team delivers specialized expertise in support of your trial, from protocol design through regulatory submission.

- ✔ **Neuroradiologists**
- ✔ **MRI physicists, including quantitative analysis specialists**
- ✔ **PET scientists**
- ✔ **Imaging technologists**

Our neuroscience team is committed to the success of your study. We work together with sponsors and sites to oversee qualitative and quantitative endpoints and deliver high-quality data for eligibility, safety, and efficacy studies.





Through internal R&D and collaborations with leading academic partners, Bioclinica utilizes validated and compliant in-house implementations of well-recognized image processing techniques, as well as the latest state-of-the-art analysis methods for evaluating investigational therapies.

## THERAPEUTIC STRENGTHS

---

Bioclinica is the world leader in centralized imaging services, providing sponsors with comprehensive support for clinical trials across all major neuroscience indications. We understand the complexities of imaging endpoints required for monitoring specific disease states.

Bioclinica's specialized expertise incorporates the latest developments in clinical neuroradiology and regulatory compliance.

### AREAS OF FOCUS

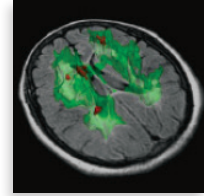
- » Alzheimer's Disease (AD) and other Dementias
- » Multiple Sclerosis (MS)
- » Parkinson's Disease (PD)
- » Stroke and Stroke Devices

### ADDITIONAL INDICATIONS

- » Acromegaly
- » Angelman's Syndrome
- » CADASIL
- » Canavan Disease
- » Contrast Agents
- » Creutzfeldt-Jakob Disease
- » Cushing's Disease
- » Down's Syndrome
- » Fabry Disease
- » Hunter Syndrome
- » Hypertriglyceridemia
- » Intracranial and Intraventricular Hemorrhage
- » MELAS Syndrome
- » Mild Cognitive Impairment
- » Molybdenum Cofactor Deficiency
- » Multiple System Atrophy
- » Neonatal and Pediatrics
- » Other Rare Diseases (ALD, MLD, MPS, GM1, GD etc.)
- » Progressive Supranuclear Palsy
- » Psychiatric Disorders (Schizophrenia, PTSD, etc.)
- » Spinal Cord Injury
- » Traumatic Brain Injury and Brain Contusions



## COMPREHENSIVE CAPABILITIES



- » **Structural MRI**
- » **Functional MRI (fMRI) - Task or Task-free**
- » **Magnetization Transfer Ratio (MTR)**
- » **Arterial Spin Labeling (ASL)**
- » **Diffusion Tensor Imaging (DTI)**
- » **Neuromelanin/Iron-sensitive MRI/QSM**
- » **Magnetic Resonance Spectroscopy (MRS)**
- » **Molecular Imaging**
  - » **FDG PET**
  - » **Amyloid PET**
  - » **Tau PET**
  - » **Investigational PET (F-DOPA, TSPO, SV2A)**
  - » **DaTscan SPECT**
  - » **TRODAT-1 SPECT**
  - » **MIBG SPECT**
- » **Computed Tomography (CT)**
- » **Angiography**
- » **ECG and ABPM**
- » **Optical Coherence Tomography (OCT)**

---

Advanced medical imaging can provide precise, quantitative information on morphometric changes in the brain, informing patient eligibility and drug efficacy. Molecular imaging and functional MRI provide increasingly vital information about brain function, enabling sophisticated evaluation of disease states. Our neuroscience team has experience with the latest advancements in biomarkers.

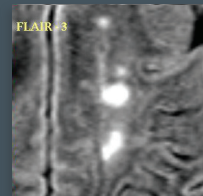
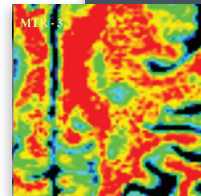
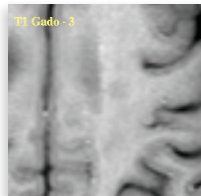
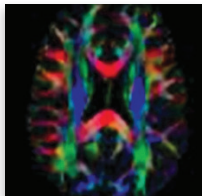
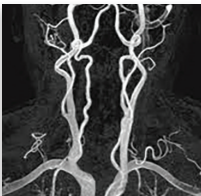
Bioclinica offers a robust services portfolio to fully support your neuroscience clinical program across all phases. Our advanced medical imaging expertise is complemented by comprehensive cardiac safety assessments and clinical adjudication services to deliver more comprehensive trial data.



# HIGH-QUALITY DATA

Bioclinica takes careful measures to ensure that the data you receive is of the highest quality and meets regulatory compliance. Initial site authorization and ongoing image quality control impact the overall quality of data emerging from a trial. We maintain close interactions with clinical and imaging sites, helping sponsors identify quality findings, resolve image queries, and adhere to protocol workflow and timelines.

- » Rigorous site qualification and training
- » Image QC
- » Independent eligibility and safety assessments
- » Robust quantitative analysis
- » Validated software that meets regulatory requirements
- » PET Tracer management services





Ready to bring clarity to your clinical trial? Visit [bioclinica.com](https://bioclinica.com).

[bioclinica.com/contact](https://bioclinica.com/contact)

