

ERT REAL-TIME ANALYTICS

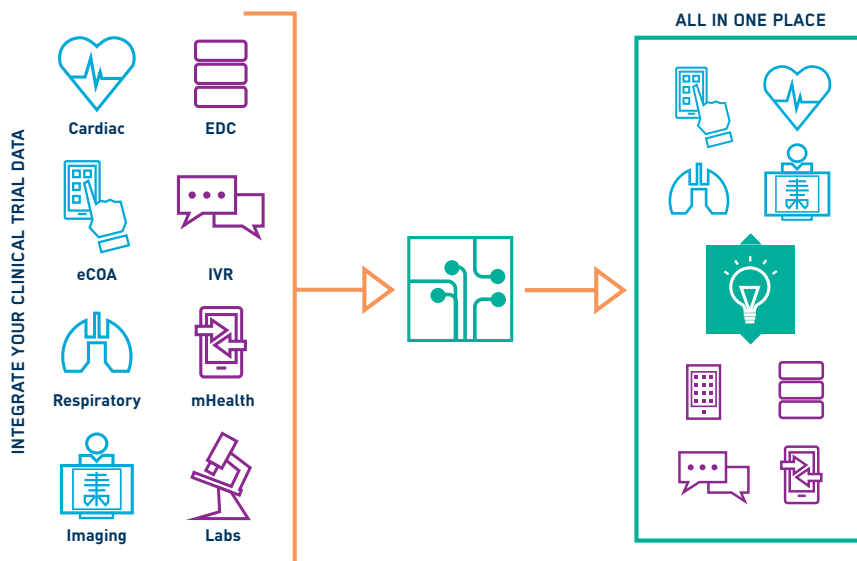
Integrate your data in one place. Without all the spreadsheets.

CENTRALIZE DATA TO UNLOCK HIDDEN INSIGHTS

Unlocking hidden insights in your data is increasingly difficult as clinical trials become more complex. Often, study teams are required to access multiple systems and data sources, including a large number of endpoints required to prove efficacy and demonstrate safety. Without centralized data across sites and studies, sponsors aren't able to view trends to mitigate risks and affect positive outcomes.

INTEGRATE YOUR STUDY DATA

ERT Real-Time Analytics solution integrates data from ERT, 3rd-party systems and devices to enhance and increase insights for your study teams. With real-time visibility, you have greater insight into site performance and overall trial progress to help support your clinical research goals, comply with the ICH E6 addendum and make decisions informed by the data and move from insights into action. Whether it's leveraging advances in mHealth technology to gain new insights and identify trends in patient outcomes, we can also help you analyze the relationship between sleep quality and activity on patient outcomes, or explore the impact of air quality on pulmonary diseases.



**MAKE PROACTIVE
DECISIONS WITH
ACTIONABLE INSIGHTS
ACROSS YOUR TRIAL
DATA**

Clarity

Achieve a single source of truth by combining your ERT study data with other clinical endpoint and operational data.

Insight

Detect variance and outliers across subjects, sites, studies and programs via customized thresholds and metrics.

Agility

Make faster, more informed decisions on protocols with actionable insights on-demand.

ERT REAL-TIME ANALYTICS IN ACTION: TOP 10 BIOPHARMA COMPANY, PHASE III COPD TRIAL

Situation

This customer's goal was to better understand and explore events preceding pulmonary exacerbations in patients with COPD. Why were some patients using more rescue medications than others? How could we be sure how much medication the patient actually took and when? Did daily activity or sleep patterns affect patient outcomes? Were active patients more or less likely to experience exacerbations? Understanding the answers to these questions would help this customer better understand the efficacy of their treatment across a wide patient population.

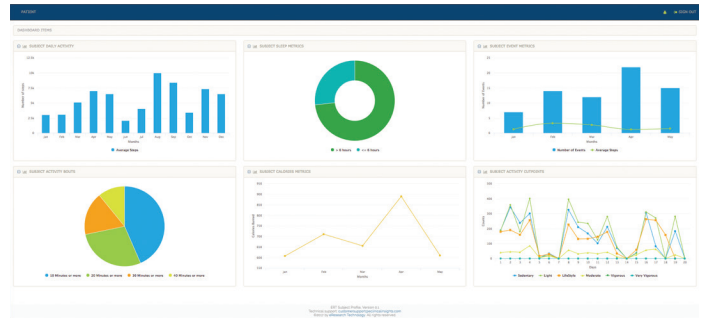
Solution

- > Integrated actigraphy data, respiratory rescue medication data and electronic patient reported outcomes (ePRO)
- > Captured sleep, activity and medication usage metrics to contextualize the patient experience
- > Visual dashboards enabled click-thru capabilities from various endpoints into the patients' questionnaires

Impact

- > Identified the correlation between patient activity, exacerbation of asthma/COPD symptoms and quantity of rescue medication over time
- > Customer brought this solution from a proof-of-concept immediately into a pivotal Phase III trial based on the quality of the analytics provided
- > With the ability to drill down and explore relationships in the data from various vantage points, researchers gained a higher level of confidence in their trial data

PATIENT EXPERIENCE CONTEXTUALIZED WITH SLEEP, ACTIVITY AND MEDICATION USAGE METRICS



Question	Response
Did your chest feel congested today	Not at all
How often did you cough	Slight
How much mucus did you cough today	Rarely
Difficulty in bringing up mucus	Not at all
Did you have chest discomfort today	A little
Did your chest feel tight today	Slightly
Were you breathless today	Unaware of breathlessness
Describe how breathless today	Not at all
Shortness of breath when performing care activities	Not at all
Shortness of breath performing indoor activities	Not at all
Shortness of breath performing outdoor activities	Not at all
www.ert.com, www.ert.com	Not at all



PROPELLER

ActiGraph

Integrate your data in one place. Without all the spreadsheets.
To learn more, email us at info@ert.com or visit ert.com.